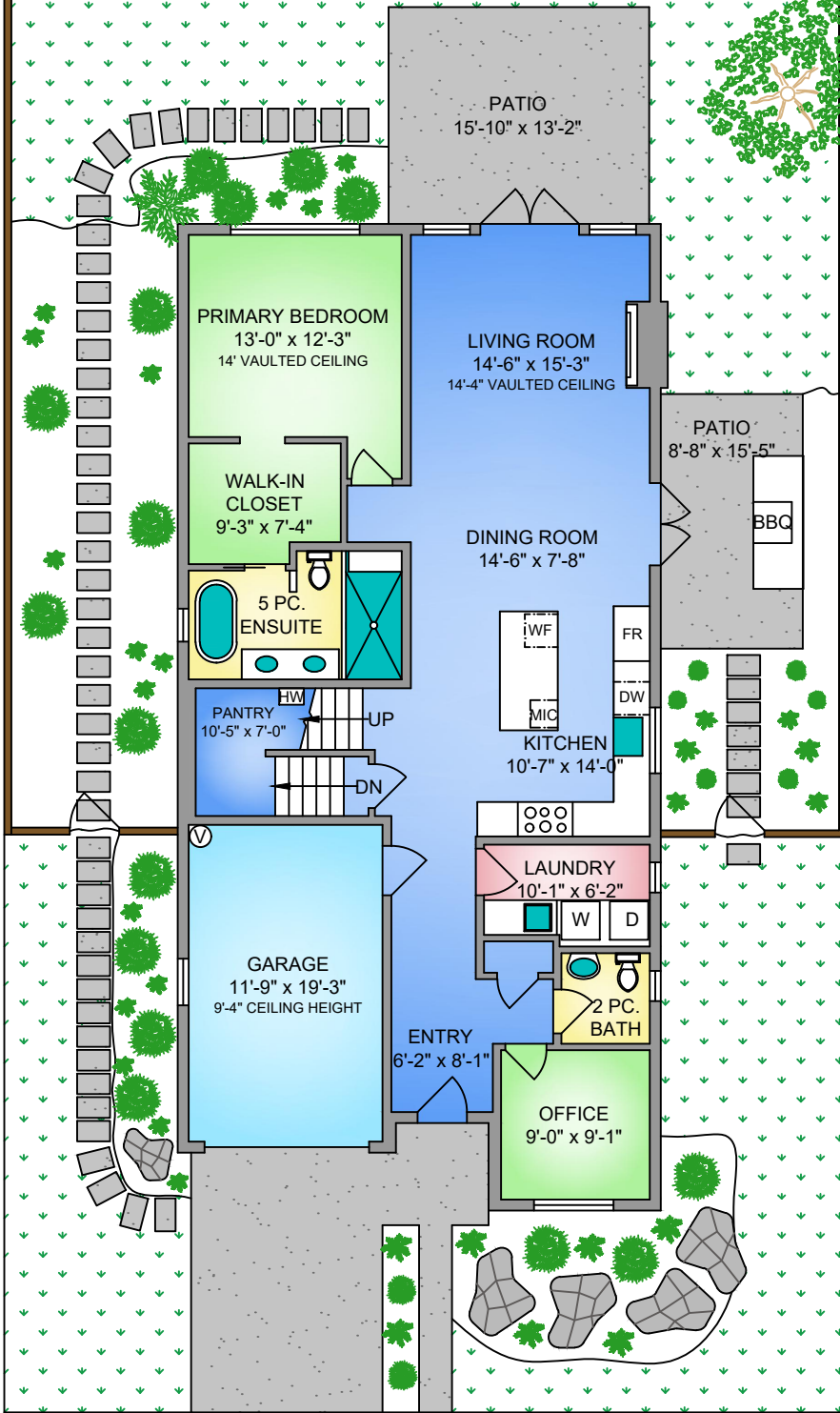
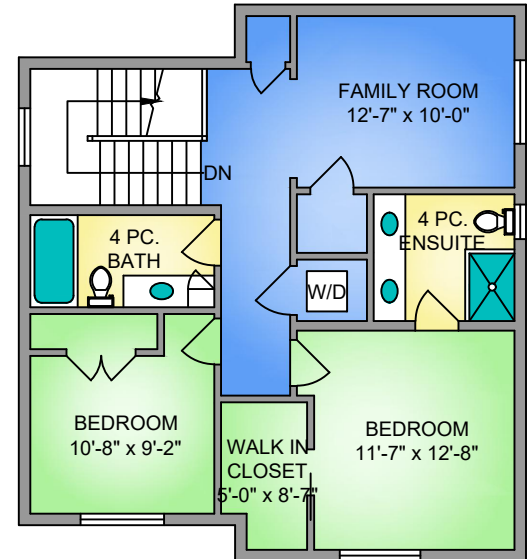


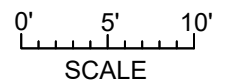
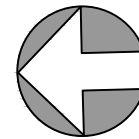
MAIN FLOOR
1425 SQ. FT.
9' CEILING HEIGHT



UPPER FLOOR
881 SQ. FT.
9' CEILING HEIGHT



NORTH



767 BYNG STREET MARCH 27, 2024 PREPARED FOR THE EXCLUSIVE USE OF THE MACLEOD GROUP PLANS MAY NOT BE 100% ACCURATE, IF CRITICAL BUYER TO VERIFY.			
FLOOR	AREA (SQ. FT.)		
	FINISHED	GARAGE	PATIO
MAIN	1425	254	317
UPPER	881	-	-
TOTAL	2306	254	317

